



Issue 37

September 2008

iCAN TIMES

Science Week Special

Dear Parents & Carers,

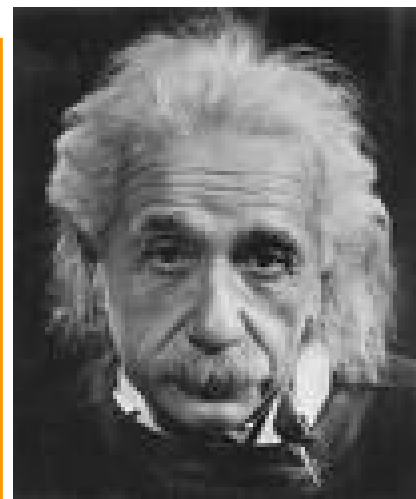
This first teaching block has certainly been busy and Science Week has been a great way to end TB1.

I hope that you enjoy this iCAN Times, please read the car park information carefully on pages 4-7.

Have a safe and restful Pchum Ben break.

Thank you to Miss Adele for organising a spectacular science week. The children and teachers were totally inspired by their scientific learning journey. There are clearly a number of budding Einsteins here at iCAN.

See inside for photos.



Social and Emotional Aspects of Learning (SEAL) focus for TB2

We will continue to explore issues concerning "Getting on and falling out". Your child will bring home an optional activity for you to do together. It will complement your child's learning in this area and give you an opportunity to be part of this learning.

Ms. Nour
PSHCE Coordinator

SICK CHILDREN

If your child is unwell please keep them at home until they are completely better. This is really important, even if your child wants to come back to school. There have been a number of children in school recently with the same symptoms, sore throats, stomach aches, fevers and headaches and they have passed this virus onto a number of other children, teachers and LSA's.



JOLLY PHONICS

REFRESHER WORKSHOP
FOR Y1 & Y2 PARENTS
ON

THURSDAY 9TH OCTOBER
1.30–2.30pm.

DATES FOR YOUR DIARY AT A GLANCE

☺6/10	No School—staff training
☺7/10	Start of TB2
☺31/10	4B Assembly
☺7/11	1A Assembly
☺7/11	TB2 ends
☺10-14/11	Water Festival holiday
☺17/11	TB3 starts

SCIENCE WEEK in our Early Years Unit



Anyone for spaghetti?

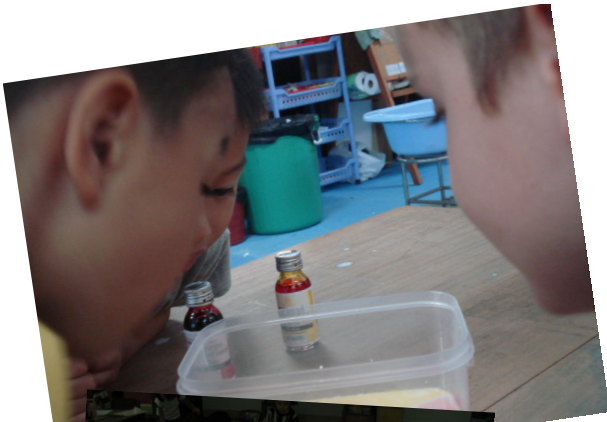
Blowing bubbles is always fun and is very scientific.



There was lots of colour mixing in the Early Years Unit.



SCIENCE WEEK in our Early Years Unit



**Yucky
yellow
hands!**



**Colourful
fun!**



SCIENCE WEEK in Key Stage 1



**Guess
what we
are
doing?**



**I can hear
something!**



SCIENCE WEEK in Key Stage 2



**You wouldn't
believe how much sugar there
is in one can of fizzy drink!
Ask Year 4!**



**Why didn't the
balloon pop?**



**No way is that egg
going to fit into that
bottle!**



SCIENCE WEEK in Key Stage 2

Year 5 made fabulous boats with motors and raced them on the pool. They also made special contraptions with Year 6 using parachutes and padding so that they could drop eggs from the roof of the Building, without the egg breaking.



Volcanic eruptions in Year 6



WOW!



Oh my goodness!



TRAFFIC CONGESTION: NEW CAR PARK SYSTEM

Over the past few months we have been looking into how the School car park can be improved to maintain the flow of traffic and avoid congestion. As a result, the car park is being redeveloped during the Pchum Ben holiday (a plan of the new look car park is on the Parent noticeboard in the canteen).

After surveying the traffic entering and leaving the car park over a one week period it was found that;

- i) The main pockets of congestion are caused by cars turning across the flow of traffic, whilst entering/leaving the car park.
- ii) Congestion is also caused by cars dropping off parents and children across the main car park entrance and by parking in the entrance area to the car park, which narrows the entrance/exit for the other cars.

The majority of cars enter the car park from the north (coming down Sothea Blvd), past iCHING.

The majority of cars leave the car park and turn right (south) towards Norodom Blvd and Mao Tse Tung Blvd.

39% of all cars leave the car park between 8.00-8.09am after dropping children off in the morning.

49% of all cars leave the car park between 3.05-3.14pm after collecting children in the afternoon.

In the morning there are 3 main times that cars tend to gridlock in the car park: 7.54am, 7.59am and 8.02am. In the afternoon there are 2 main times that cars tend to gridlock in the car park: 3.03pm and 3.06pm.

In addition to redeveloping the car park (which we lease), we will be implementing new traffic measures following feedback from parents and the traffic police to help ease the congestion around our School (especially during drop-off & collection times). These measures will begin after the Pchum Ben holiday.

As from Tuesday 7th October, all traffic to and from the School car park will follow a one-way system operating clockwise, northwards up Norodom Blvd and southwards down Sothea Blvd (please see plan over-leaf). You will only be able to turn right into the School car park. As you leave the School car park you will also only be able to turn right towards Norodom/Mao Tse Tung Blvd.

Additional staff have also been employed to help implement our new anti-congestion system. We will review the new 1-way system to/from School at the end of Teaching Block 2 (07/11/08).

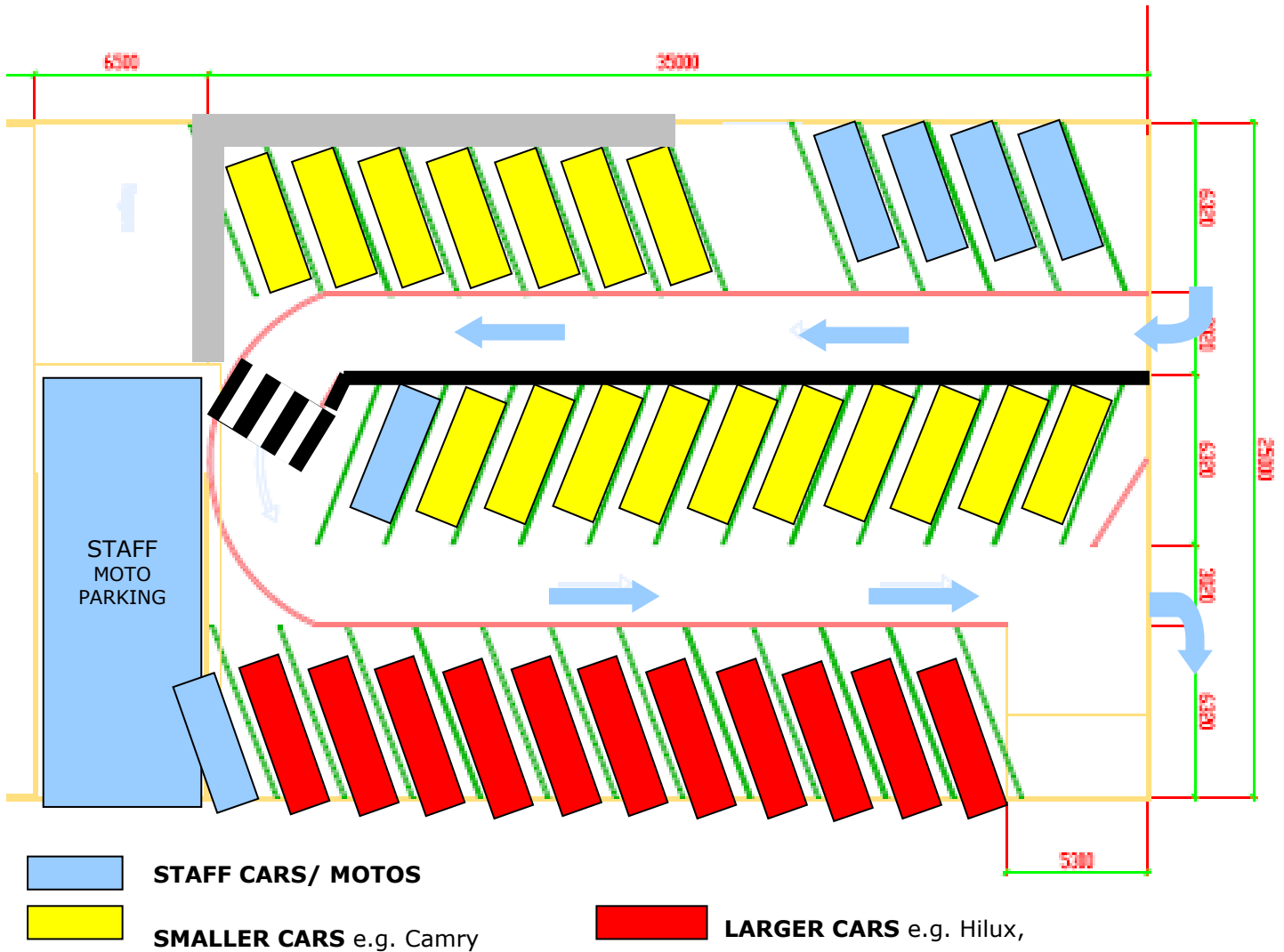
Thank you for your active support in helping to reduce the congestion.

Other ways you can help ease congestion include: dropping children off at School between 7.30-7.50am (N2 upwards), car sharing, walking to School, and having your car washed at the carwash next to the School car park whilst you drop off or collect your child.

A plan of the new car park along with a summary of our car park survey is on the Parent noticeboard in the canteen. We would welcome your observations as we implement this new traffic measure. Please direct all feedback to our School Coordinator, Mr. Sophak.

The Directors and Senior Management Team

TRAFFIC CONGESTION: NEW CAR PARK LAYOUT



SAFETY

Please ensure that every measure is taken to ensure the safety of your children and yourselves.

In line with most other countries, Cambodian law requires that seatbelts are worn by both passengers and drivers in cars.

Helmets should also be worn when riding on a motorbike.



អំពីការស្ទង់ចរាចរណ៍: ប្រព័ន្ធចំណតរថយន្តថ្មី

ជូនចំពោះមាតាបិតា អាណាព្យាបាលសិស្ស និង អ្នកបើកបរ

រយៈកាលប៉ុន្មានខែកន្លងមកយើងខ្ញុំបានត្រួតពិនិត្យចំណតរថយន្តដើម្បីកែសម្រួលនូវដំណើរការនៃចរាចរណ៍ និង ការរៀបរៀងភាពកកស្ទះ ។ ជាលទ្ធផលយើងខ្ញុំនឹងរៀបចំកែសម្រួលប្រព័ន្ធចំណតនៅពេលឈប់សំរាកបុណ្យភ្ជុំបិណ្ឌខាងមុខនេះ (គំរូបង្អស់នៃប្រព័ន្ធចំណត នឹងមានបិទនៅក្តៅខែ- រៀនសំរាប់មាតាបិតាសិស្ស កន្លែងញ៉ាំបាយ) ។

បន្ទាប់ពីបានធ្វើការអង្កេតអំពីចរាចរណ៍ ចូល និងចេញ រយៈពេលមួយសប្តាហ៍ យើងរកឃើញថា :

១. ចំនុចផ្ទៃនៃការកកស្ទះ គឺបណ្តាលមកពីរថយន្តបត់ឆ្លងកាត់ទិសចរាចរណ៍ ពេលដែលចូល និង ចេញ កន្លែងចតរថយន្ត ។
២. ការកកស្ទះ បណ្តាលផងដែរមកពីរថយន្តដាក់សិស្សចុះដែលឆ្លងកាត់មាត់ច្រកកន្លែងចតរថយន្ត ដោយចតនៅកន្លែងមាត់ច្រក ដែលបណ្តាលអោយ- មានច្រកចេញ ចូល ចង្អៀត ។
៣. រថយន្តភាគច្រើនមកពីទិសខាងជើង បត់ចូលកន្លែងចត
៤. រថយន្តភាគច្រើនចេញពីកន្លែងចតបត់ទៅទិសខាងត្បូង (ឆ្ពោះទៅផ្លូវ នរោត្តម និង ម៉ៅ សេងទុង)
៥. រថយន្ត ៣៩ % ចាកចេញពីកន្លែងចតនៅចន្លោះម៉ោង ៨ — ៨.០៩ ព្រឹក បន្ទាប់ពីដាក់សិស្សរួចរាល់
៦. រថយន្ត ៤៩ % ចាកចេញពីកន្លែងចត នៅចន្លោះម៉ោង ៣.០៥ — ៣.១៤ រសៀល បន្ទាប់ពីទទួលសិស្សរួច
៧. ព្រឹក មានពេលដែលស្ទះខ្លាំង ក្នុងកន្លែងចតរថយន្ត ៣ពេល នៅម៉ោង ៧.៤៥ , ៧.៥៩ និង ៨.០២ ព្រឹក រសៀល មានពេលដែលស្ទះខ្លាំង ក្នុងកន្លែងចតរថយន្ត ២ពេល នៅម៉ោង ៣.០៣ និង ៣.០៦ រសៀល ។

ជាការបន្ថែម ទៅលើការរៀបចំកែសម្រួល ចំណតរថយន្ត យើងខ្ញុំ នឹងធ្វើការអនុវត្ត វិធានការដែលបានទទួល ការផ្តល់យោបល់ពីមាតាបិតាសិស្ស និង ប៉ូលីសចរាចរណ៍ ដើម្បីជួយសំរួលកុំអោយស្ទះ ជាពិសេសពេលដាក់សិស្សចុះ និង ពេលទទួល សិស្ស ។ ហើយវិធានការទាំងនេះនឹងចាប់ផ្តើមអនុវត្ត បន្ទាប់ពី ឈប់សំរាកបុណ្យភ្ជុំបិណ្ឌ ។

ដោយចាប់ពី ថ្ងៃ អង្គារ ទី ៧ ខែតុលា ទៅ រាល់ចរាចរណ៍ចូល ចេញ នៅកន្លែងចតរថយន្ត នឹងគោរពតាម ប្រព័ន្ធផ្លូវទិសដៅតែមួយ តាមទ្រនិចនាឡិកា ដោយបើកតាមផ្លូវនរោត្តម ត្រង់ហើយបត់ចុះមកត្បូងតាមផ្លូវសុធារស គឺ មកពីទិសខាងជើង និង ចេញវិញតាមទិសខាងត្បូង (សូមមើលបង្អស់ចរាចរណ៍ ភ្ជុំបិណ្ឌបំប៉នជាមួយ) ។ លោក អ្នក អាចបត់ស្តាំ សំរាប់ចូលកន្លែងចតរថយន្ត ប៉ុណ្ណោះ និង ចាកចេញពីកន្លែងចតរថយន្ត ដោយបត់ស្តាំឆ្ពោះទៅផ្លូវ នរោត្តម , ម៉ៅ សេងទុង ប៉ុណ្ណោះ ។

យើងខ្ញុំបន្ថែមបុគ្គលិក អោយជួយអនុវត្ត លើ ប្រព័ន្ធ ការពារកុំអោយស្ទះនេះ ហើយនឹងមានការកែលម្អបន្ថែមទៀតនូវខែវិច្ឆិកា ។

សូមថ្លែងអំណរគុណចំពោះការចូលរួមប្រោមជ្រែងយ៉ាងសកម្ម ក្នុងការជួយកាត់បន្ថយការស្ទះចរាចរណ៍ ហើយម្យ៉ាងទៀត ដើម្បីជួយសំរួលការស្ទះ : អាចជូនសិស្សមកសាលា កំឡុងម៉ោង ៧.៣០ — ៧.៥០ ព្រឹក (៧.៣០ ឡើង) , ជិះឡានជាមួយគ្នា, ដើរទៅសាលា, ដាក់លាងរថយន្ត នៅជិតកន្លែងចតរថយន្ត ពេលយកសិស្សមកសាលា រឺពេលទទួលសិស្ស ។

ប្លង់ របស់កន្លែងចតរថយន្តថ្មី ជាមួយ ការសង្ខេបអំពីការអង្កេត កន្លែងចតរថយន្ត មានដាក់នៅ ក្តៅខែសំរាប់មាតាបិតាសិស្ស នៅកន្លែងញ៉ាំបាយសិស្ស ។ យើងខ្ញុំស្វាគមន៍ ចំពោះការសង្កេត អំពីការអនុវត្តវិធានការចរាចរណ៍ថ្មី នេះ ។

សូមផ្តល់យោបល់ដោយផ្ទាល់ទៅលោក សុភ័ក្ត្រ ។

TRAFFIC CONGESTION: NEW CAR PARK SYSTEM



ប្រព័ន្ធប្រើប្រាស់ទិសដៅតែមួយដែល
ចាប់អនុវត្ត នៅថ្ងៃទី ០៧ ខែ

តុលា ឆ្នាំ ២០០៨

សំរាប់ការសាងសង់នៃព័ត៌មានស្តីពី

ប្រព័ន្ធថវិកាសាស្ត្រ

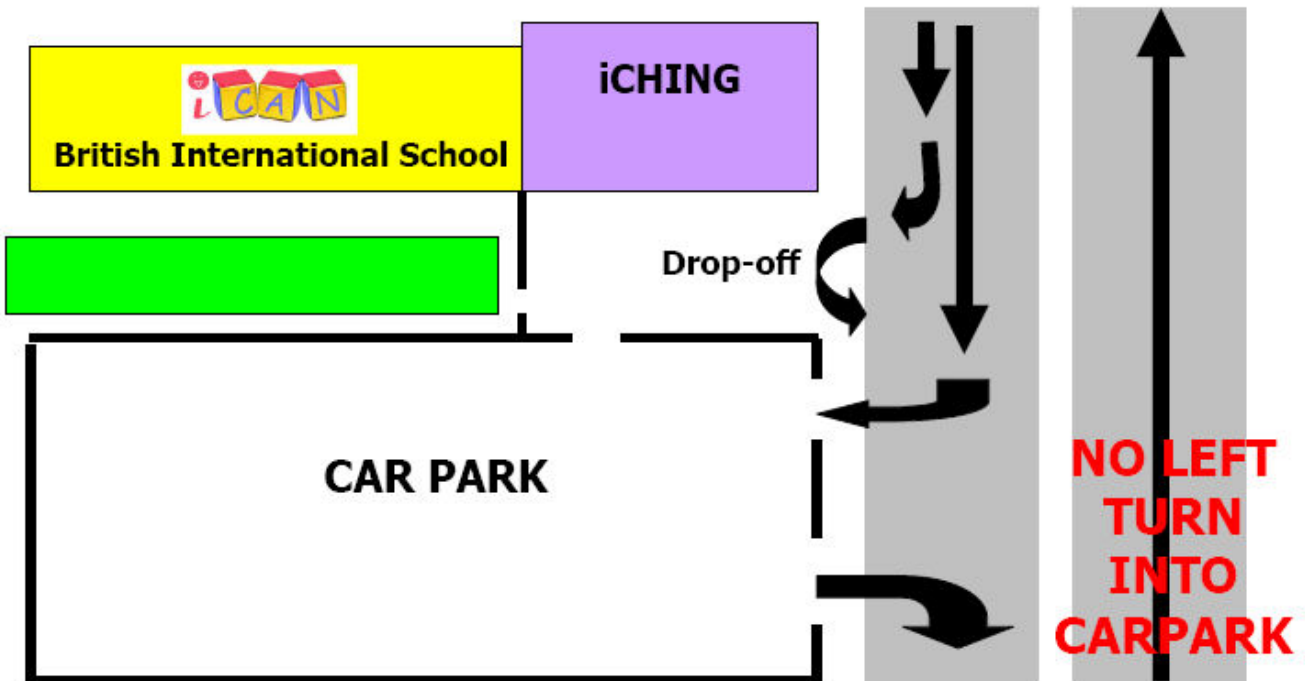
សូមមើលផ្កាខ្មៅ

រៀនសំរាប់មាតាបិតា កន្លែង

ឈ្នាំរយ និង

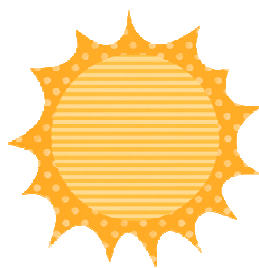
សូមបត់តាមគំនូសបែកកន្លែងបត់ ពេលលោកអ្នកបើកបរកន្លែងបត់រថយន្ត

ដែលបានសម្រួលអោយអាចបត់បានច្រើន និងរក្សាបរាមណ៍បានល្អ



iCAN British
International School
85, Sothearos Blvd.
Sangkat Tonle Bassac
Phnom Penh
Cambodia

Phone: (855-23) 222 416-8
Fax: (855- 23) 222 418
Email: ican@ican.edu.kh



IMPORTANT SAFETY IN THE SUN TIPS

Send your child to school with a hat to wear at playtime.

Choose suitable clothing for your children to wear to school.

Apply sunscreen to your child's face and body before they come to school. They can reapply it later in the day if they are able to do so themselves.

Ensure that your child brings a refillable water bottle to school each day.



STAFF NEWS

Ms. Adele will be returning to the UK this week for personal reasons and we will all be really sad to see her go. She has been a huge asset to iCAN and certainly went out with a bang (coordinating Science week). We wish her all the best for the future. Miss Bec who has been with us since the beginning of September will be the new Year 4 class teacher and Art Coordinator.

Ms. Denise will also be leaving iCAN at Pchum Ben but will still be part of our community as a parent. We know she is going to make the most of the rest of her time here in Cambodia. Mr. David and Ms. Kathryn will be team-teaching in Reception.

We are also looking forward to Ms. Amitha returning to EAL after her period of leave in the UK.

Thank you to Ms. Shubhra who covered the classes in her absence.

CREATIVE PARENTS NEEDED TO HELP WITH OUR CREATIVE ARTS WEEK 8/12–12/12

IF YOU HAVE A MUSICAL, DANCE, DRAMA
OR ARTISTIC SKILL TO SHARE. PLEASE
CONTACT MR ANDY OR MS. BEC
FOR FURTHER DETAILS,

